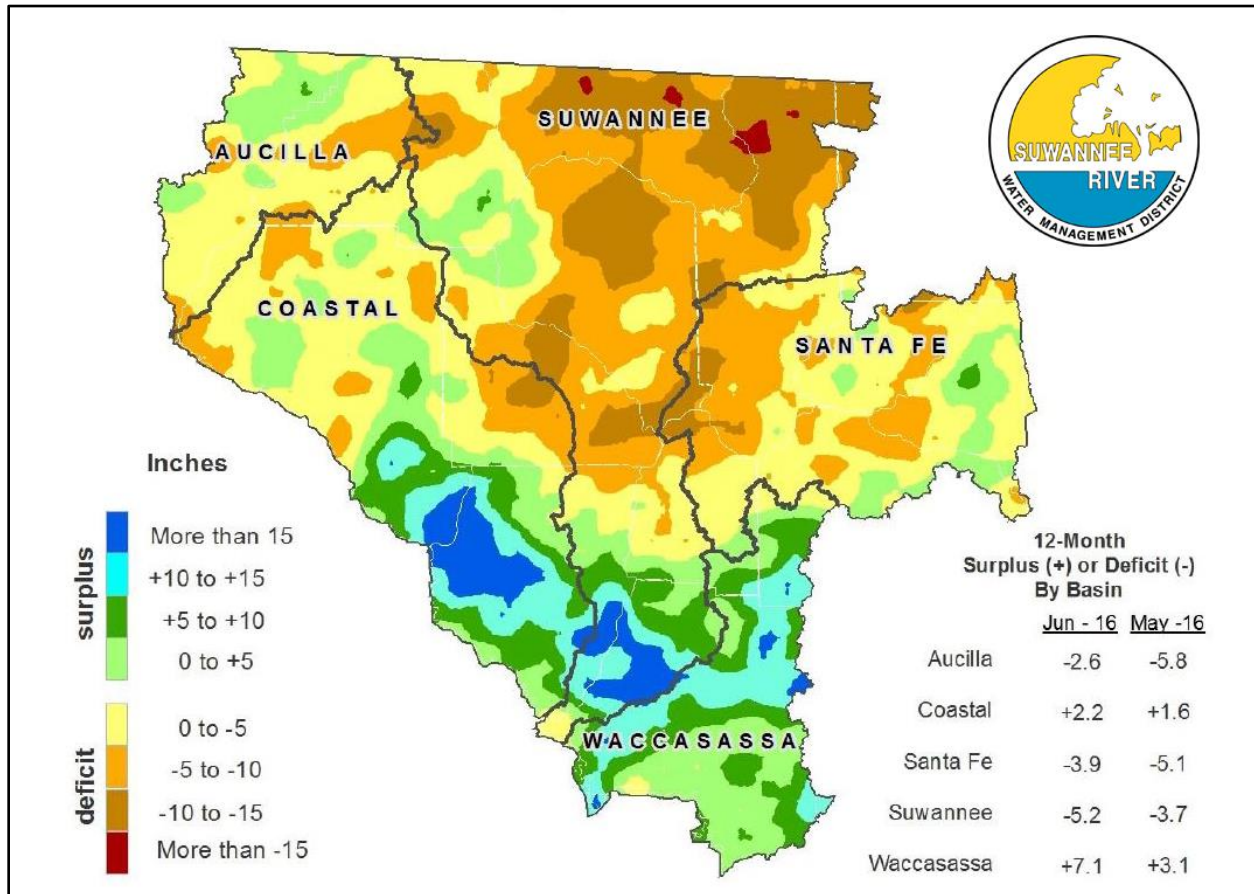


**FOR IMMEDIATE RELEASE**

**CONTACT:** Abby Johnson, Office of Communications  
Suwannee River Water Management District  
386.362.1001 or 800.226.1066 (FL)  
[www.mysuwanneeriver.com](http://www.mysuwanneeriver.com)



**June 2016 hydrologic conditions across SRWMD**



**12-Month Rainfall Surplus/Deficit by river basin through June 30, 2016.**

LIVE OAK, FLA, July 19, 2016 – District-wide rainfall in June averaged 5.95 inches across the Suwannee River Water Management District (District). The long-term June average monthly rainfall for the District is 6.39 inches. Highest rainfall amounts fell in the southern portion of the District; both Alachua and Levy counties received more than 8 inches of rain, although a greater proportion of that rain fell outside the District boundary. Some areas of Alachua, Dixie and Levy counties saw rainfall totals over 11 inches, generally associated with the passage of Tropical Storm Colin early in June.

The highest gaged monthly rainfall total of 9.19 inches was recorded in Jefferson County, and the highest daily total of 6.33 inches was also recorded there during the

peak of Tropical Storm Colin on June 6. The lowest gaged monthly total of 1.24 inches was recorded in Hamilton County.

The rainfall average across the District for the 12-month period ending June 30 was 52.0 inches, compared to the long-term average of 54.7 inches. The cumulative 12-month District-wide rainfall deficit continued to improve for the third month in a row to 2.7 inches.

For the third month in a row annual rainfall deficits improved in the Santa Fe Basin. The Waccasassa River Basin also continues to show a large annual rainfall surplus. Increases in the Santa Fe and Waccasassa River Basins brought their respective rainfall deficits to near parity during June. However, rainfall deficits in the Suwannee River Basin, and the Upper Suwannee in particular, dropped to 90 percent of normal. The Suwannee River Basin deficit increased to -2.4 inches.

Lake levels at four lakes remained below average levels as the month ended. Alligator Lake in Lake City remains below the gage bottom, and Waters Lake in Gilchrist County declined about 9 inches during the month. However, Sneads Smokehouse Lake in Jefferson County rose by just over 1 foot as a result of tropical storm rainfall. Lakes toward the center of the District tended to decrease in level during June, while those at the western and eastern boundaries increased.

Spring flows generally decreased during the month as a result of declining levels in the Floridan aquifer, particularly among the Suwannee River springs.

The full Hydrologic Conditions report is available on the District's Water Data Portal, [www.mysuwanneeriver.com/waterdataportal](http://www.mysuwanneeriver.com/waterdataportal) .

###